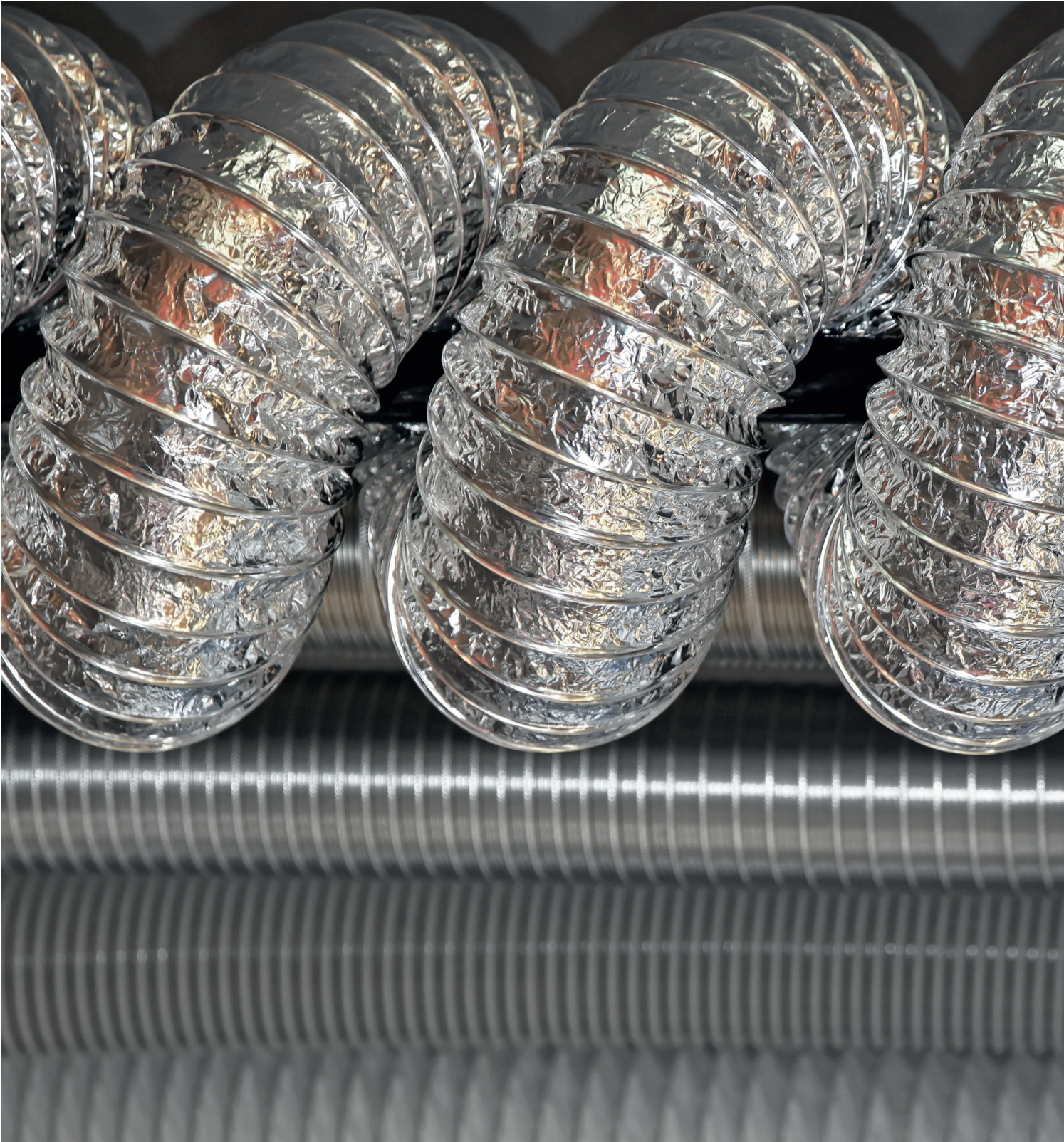


# **FLEXIBLE DUCTS**







## Flexible Ducts Models

AIR

---

SKY

---

COMBI

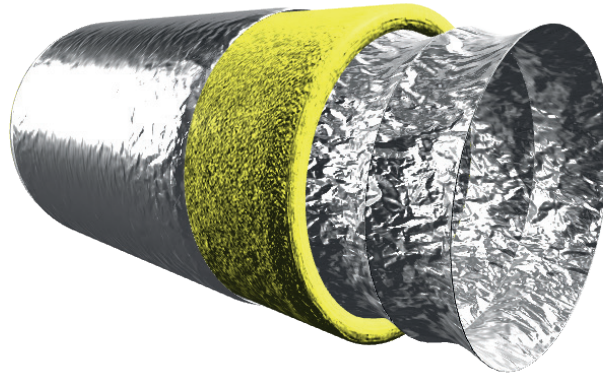
---

ESSI

---

SHIELD

---

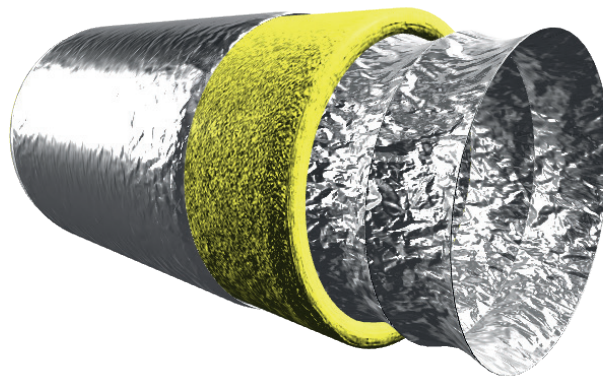


## AIR

AIR Serie Heat Insulated Design Flexible Ducts can be customized according to different use cases. 5.000 Pa resistance of pressure. Standart packing is 10 meters. Standart Insulation Material is glasswool 25 mm( R-4.2) 40 mm(R-6) 50 mm( R-8) options available. Humdity resistance.

## Technical Information

<b>Material</b>	Aluminum + Polyester
<b>Material - Outer Jacket</b>	Aluminum + Polyester
<b>Insulation Material</b>	Glasswool
<b>Certificate</b>	-
<b>Flame Resistance</b>	-30 °C / 80 °C
<b>Maximum Air Velocity</b>	30 m/s
<b>Maximum Operating Pressure</b>	5.000 Pa
<b>Diameter Range</b>	Ø 76 mm - Ø 610 mm
<b>Standard Length</b>	10 m/Box



## **SKY**

SKY Serie Heat Insulated and Flame reterdant Flexible Ducts can be customized according to different use cases. 5.000 Pa resistance of pressure. Standart packing is 10 meters. Standart Insulation Material is glasswool 25 mm( R-4.2) 40 mm(R-6) 50 mm( R-8) options available.

## Technical Information

<b>Material</b>	Aluminum + Polyester
<b>Material - Outer Jacket</b>	Aluminum + Polyester
<b>Insulation Material</b>	Glasswool
<b>Certificate</b>	Flame Retardant (M1)
<b>Flame Resistance</b>	-30 °C / 80 °C
<b>Maximum Air Velocity</b>	30 m/s
<b>Maximum Operating Pressure</b>	5.000 Pa
<b>Diameter Range</b>	Ø 76 mm - Ø 610 mm
<b>Standard Length</b>	10 m/Box



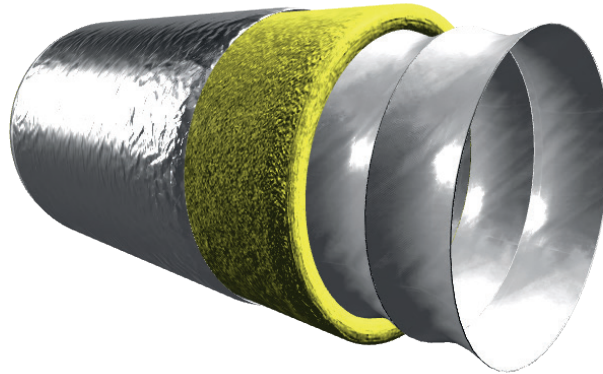
## **COMBI**

Combi Serie Mousture Barrier and standart Flexible Ducts can be customized according to different use cases. 5.000 Pa resistance of pressure. Standart packing is 10 meters.

## Technical Information

<b>Material</b>	Aluminum + Polyester
<b>Material - Outer Jacket</b>	-
<b>Insulation Material</b>	-
<b>Certificate</b>	Moisture Barrier
<b>Flame Resistance</b>	-30 °C / 120 °C
<b>Maximum Air Velocity</b>	30 m/s
<b>Maximum Operating Pressure</b>	5.000 Pa
<b>Diameter Range</b>	Ø 76 mm - Ø 610 mm
<b>Standard Length</b>	10 m/Box





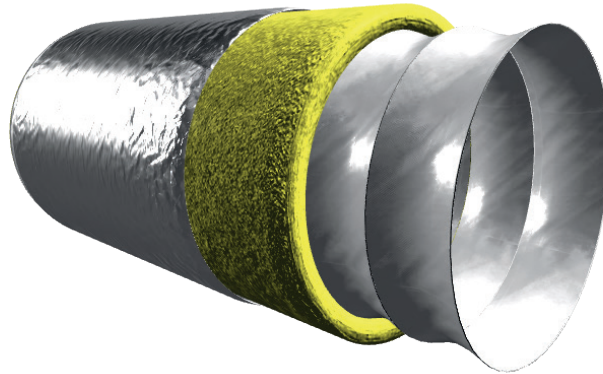
## **ESSI**

Essi Serie Heat Insulated and 300 Denier PVC, Particle and tear resistant inner duct Flexibles can be customized according to different use cases.

10.000 Pa resistance of pressure. Standart packing is 10 meters. Standart Insulation Material is glasswool 25 mm( R-4.2) 40 mm(R-6) 50 mm( R-8) options available.

## Technical Information

<b>Material</b>	PVC (300-denier)
<b>Material - Outer Jacket</b>	Aluminum + Polyester
<b>Insulation Material</b>	Glasswool
<b>Certificate</b>	Particle Resistant
<b>Flame Resistance</b>	-30 °C / 80 °C
<b>Maximum Air Velocity</b>	30 m/s
<b>Maximum Operating Pressure</b>	10.000 Pa
<b>Diameter Range</b>	Ø 76 mm - Ø 610 mm
<b>Standard Length</b>	10 m/Box



## SHIELD

Shield Serie Heat Insulated and 750 Denier PVC, Particle and tear resistant inner duct Flexibles can be customized according to different use cases.

10.000 Pa resistance of pressure. Standart packing is 10 meters. Standart Insulation Material is glasswool 25 mm( R-4.2) 40 mm(R-6) 50 mm( R-8) options available.

## Technical Information

<b>Material</b>	PVC (750-denier)
<b>Material - Outer Jacket</b>	Aluminum + Polyester
<b>Insulation Material</b>	Glasswool
<b>Certificate</b>	Particle Resistant
<b>Flame Resistance</b>	-30 °C / 80 °C
<b>Maximum Air Velocity</b>	30 m/s
<b>Maximum Operating Pressure</b>	10.000 Pa
<b>Diameter Range</b>	Ø 76 mm - Ø 610 mm
<b>Standard Length</b>	10 m/Box